

DFG-6TO2

mIPm Series Acrylic Flow Meter

mIPm 系列高精度有机玻璃流量计

DFG-6TO2 flow meter, which is made of Acrylic, is used to measure the single-phase non-pulsating flux of oxygen. It is featured in beautiful look, light weight and long life span.

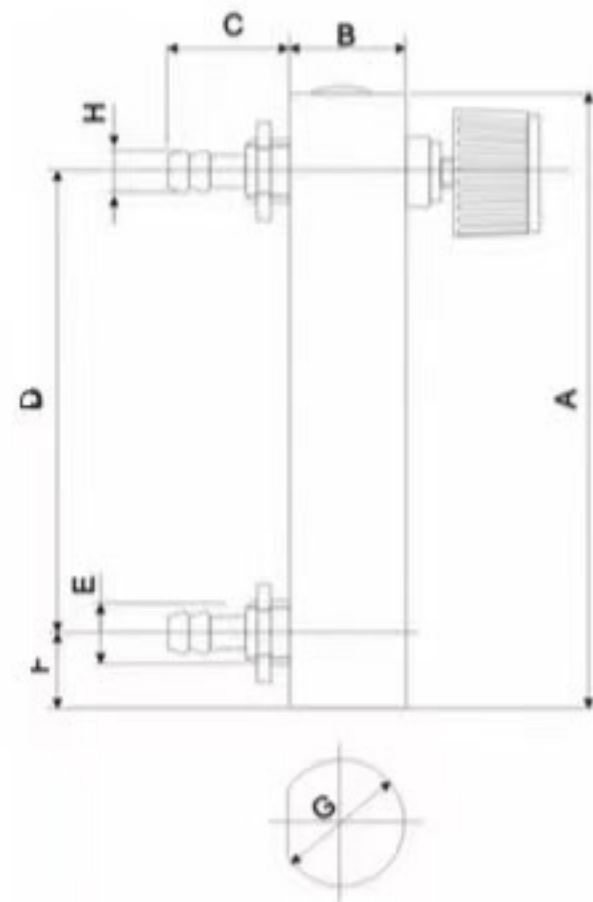
氧吧流量计是一种以有机玻璃为主体的流量计，用来测量氧气单向非动脉的流量。它的特点是外形美观，重量轻，不易破碎，使用寿命长。



The Outline Size Of DFG-6TO₂ series Flow Meter

DFG-6TO₂系列流量计外形尺寸

Model 型号	Measure Range (l/min) 测量范围	Connection type 连接方式	Accuracy 精度	Size(mm) 尺寸							
				A	B	C	D	E	F	G	H
DFG-6TO ₂	1	1-3	±5%	60	20	21 or 19	40	M10x1 (or) 9/16-18	8	22	8
	2	1-5		72	20		50		7	22	7
	3	0.5 0.9 0-10		93	20		70		10	22	8
	4	1-5 0-6		96	20		70		13	22	8
	5	0.5 1-5 0.1-1 2-10 0.5-14 4-25		106	20		80		13	22	8
	6	1-5 0.5-10 2-10		108	20		70		25	22	8
	7	0.5 1-5 2-10 0.5-14		115.5	20		90		13	22	8



For Order: please specify the model, specification and code 选型表.

	Model 型号	Regulating Valve 是否带阀	Measuring Range 流量范围	Material of the fitting 接头材质
DFG - 6TO2	<input type="text"/>	<input type="text"/>	<input type="text"/>	<input type="text"/>

PERFORMANCE LIL TRA-STABLE
ADVANCED FUNCTIONS
CONVENENT OPERAION

* Special requirments
can be customized

Production specifications :

Service : Oxygen

Wetted Materials: Acrylic and electroplated brass. SS

Ball Float: Stainless steel ; Agate; O-ring: NBR.

Temperature Limit: 32-140°F (0-60°C).

Pressure Limit: 29 psi (2.0 bar).

Accuracy: ±5% of full scale.

Connection: 1/4" I.D. Tubing.

Mounting: Vertical.

The material and code of the parts of
DFG-6TO₂.

DFG-6TO₂系列流量计零部件材质及代码

With Valve 有无调节阀	Valve 调节阀材质	Fitting 接头材质	Float 浮子材质	O-ring O形圈材质
T-with 带阀	1.Brass 黄铜	1.Brass 黄铜	1.Agate ball 玛瑙球	1.Fluorin rubber 氟橡胶
0-No 不带阀	2.SS 不锈钢	2.Brass chromeplate 铜镀铬 3.SS 不锈钢 4.POM Plastic POM塑料	2.SS ball 不锈钢球	2.Butyl 丁基

技术参数:

介质: 氧气

内部材质: 亚克力体, 黄铜接头。

浮子材料: 不锈钢, 玛瑙; 密封圈: NBR

使用温度: 32-140° F (0-60° C).

压力上限: 29 psi (2.0 bar).

精度: ±5%

连接: 直插

安装: 垂直

OEM Choice 需定制请联系我们

