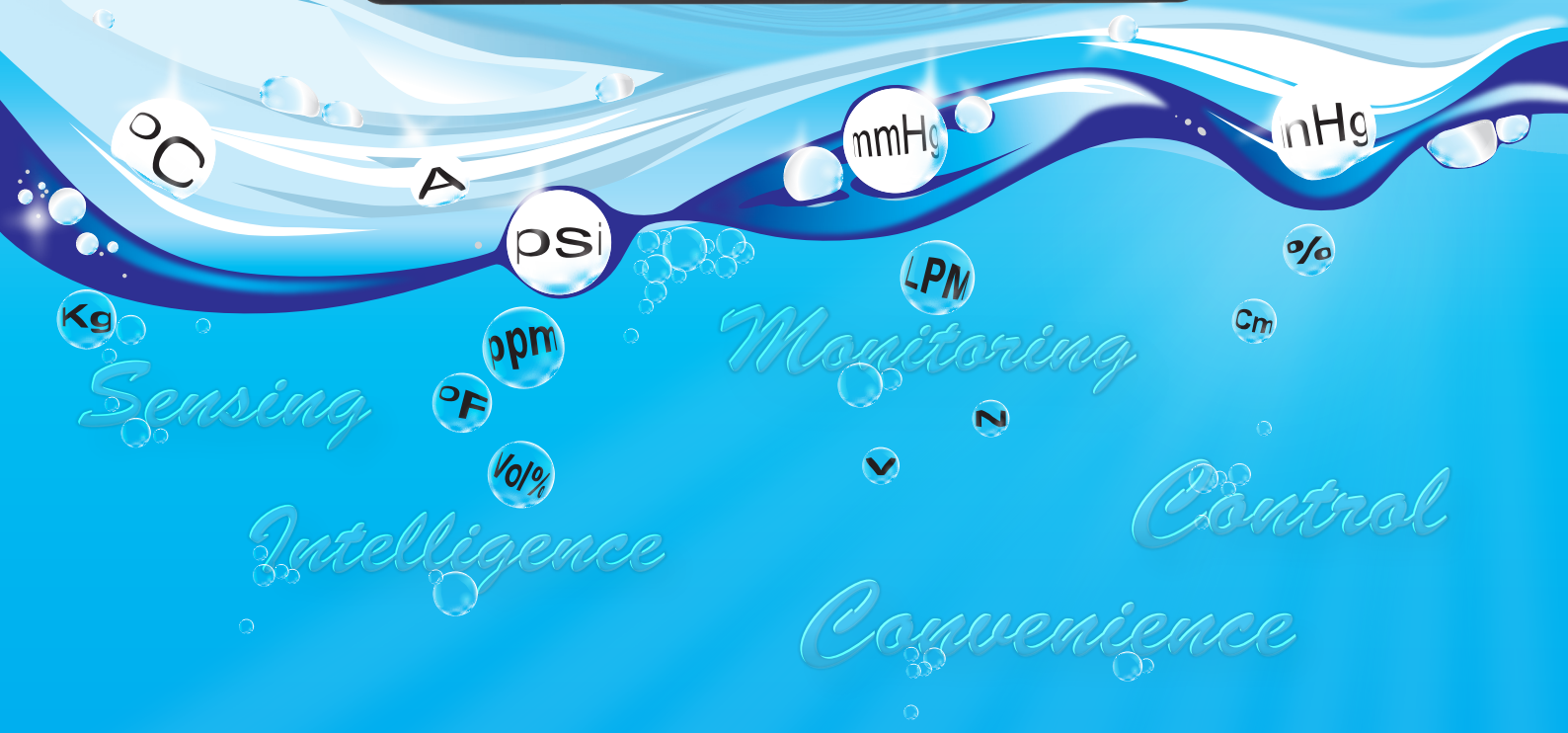
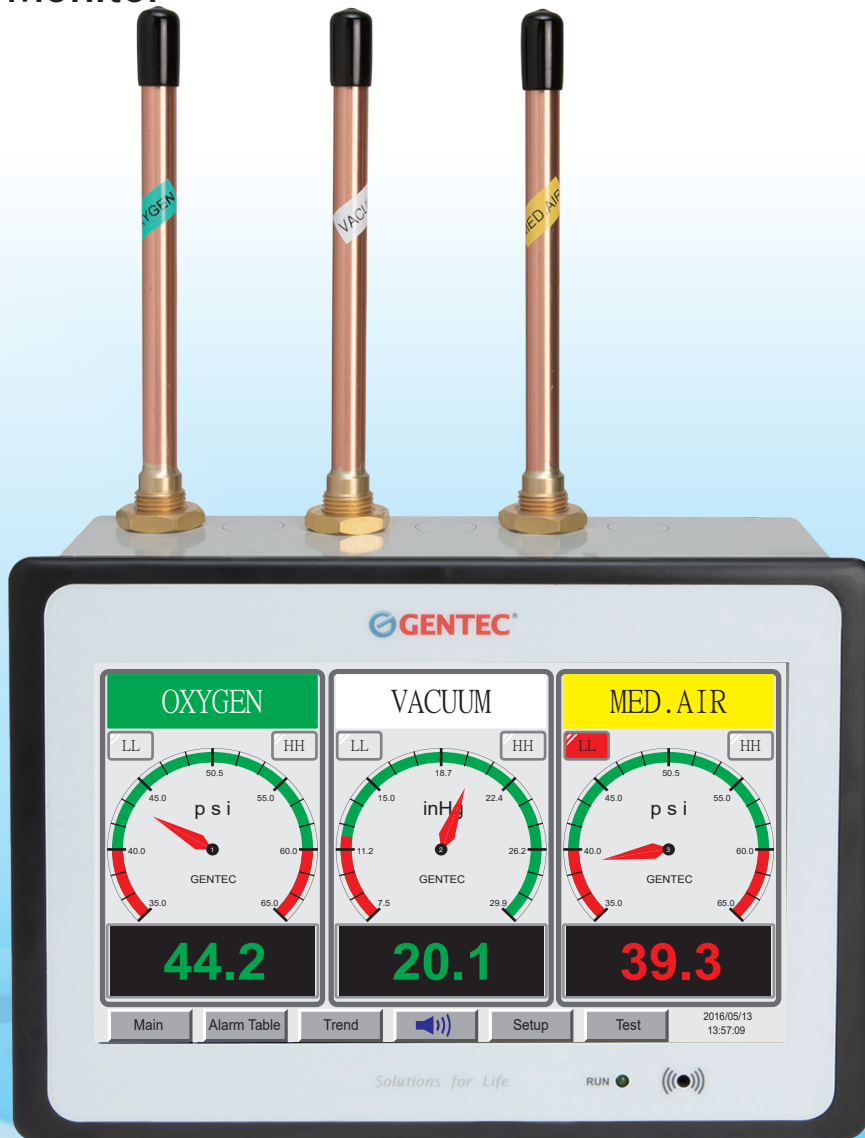


GM100M

GENTEC Monitor



FEATURES



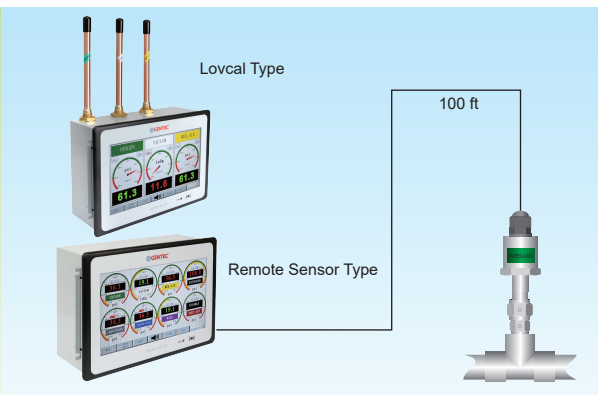
GM100M alarm actively displays your medical gas information on a highly visible 10" TFT LCD screen. It is capable of handling up to 8 gases, 14 digital inputs, 7 relay outputs and 2 analog outputs in one alarm covering all needs of hospital regardless of gas type.

Numerical value indicates red during an alarm condition and remains a constant red after silencing until the condition is removed.

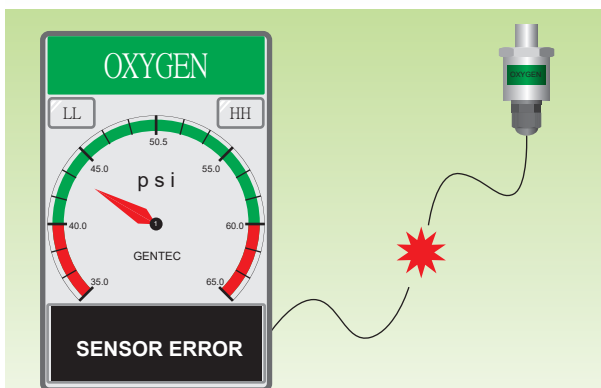
The LCD touch screen display allows to set up on site without the use of tools including LCD brightness, two wire 4-20mA transducers with user-defined values, hysteresis, silent time, communication parameters, and alarm set points (high and low).



Each transducer accessory contains a gas specific DISS fitting to ensure that the transducer is connected to its corresponding gas.



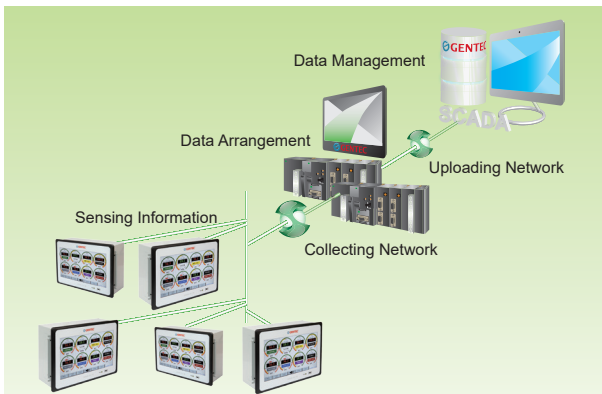
Transducers can be mounted locally or remotely utilizing shielded twisted pair wiring up to 100 ft (30.5 m).



With circuitry protection and detection, if the transducer is not connected appropriately at all, an error message (No Sensors) will be displayed.



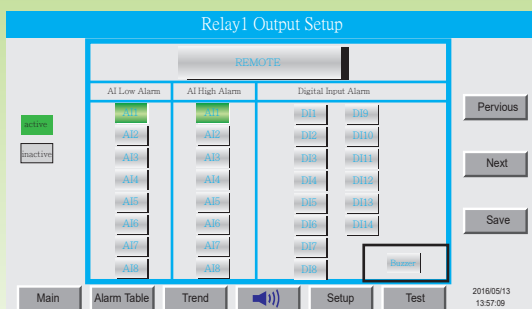
Analog Outputs can duplicate transducers output for remote indicators usage.



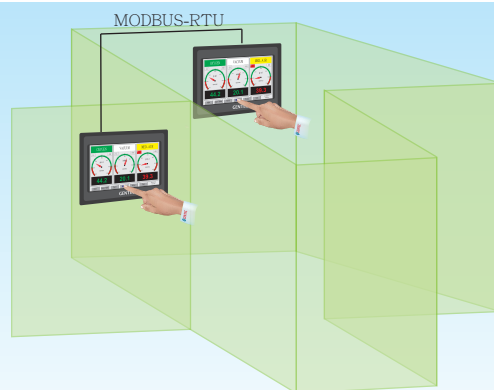
The alarm system includes full networking capabilities out of the box. The system supports MODBUS RTU/TCP and UDP protocols to communicate with other devices.

	StartTime	StopTime	Event
168	2016/05/16	16/14:22	CH1 Low Alarm
167	2016/05/16	16/13:46	CH2 High Alarm
166	2016/05/16	16/12:00	CH3 Low Alarm
165	2016/05/16	16/12:25	CH4 High Alarm
164	2016/05/16	16/12:17	CH1 Low Alarm
163	2016/05/16	16/12:01	CH2 High Alarm
162	2016/05/16	16/11:06	CH3 Low Alarm
161	2016/05/16	16/10:58	CH4 High Alarm
160	2016/05/16	16/10:17	CH1 Low Alarm
159	2016/05/16	16/10:01	CH2 High Alarm
158	2016/05/16	16/09:06	CH3 Low Alarm
157	2016/05/16	16/09:58	CH4 High Alarm
156	2016/05/16	16/07:36	CH2 High Alarm

With onsite history logs, user can trace alarm record easily.

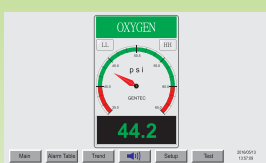


The alarm system allows users to have optional relay outputs according to single or multiple alarm conditions.

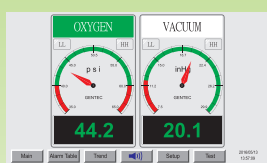


A remote display can be used to capture and display (mirror) all readings from other GM100M alarm panels via MODBUS RTU. Customized alarm conditions on mirrored pressures and signals, enabling to have equivalent instructions at all panel.

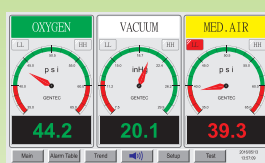
Sample of Device



Area Alarm GM100M-A-O



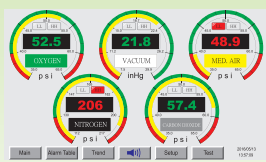
Area Alarm GM100M-A-OV



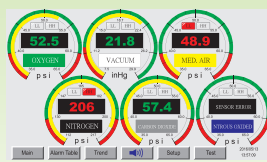
Area Alarm GM100M-A-OVA



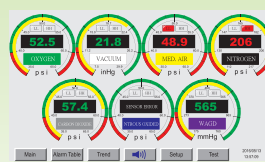
Area Alarm GM100M-A-OVAN



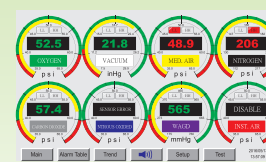
Area Alarm GM100M-A-OVANC



Area Alarm GM100M-A-OVANC2 (Remote Sensor Only)



Area Alarm GM100M-A-OVANC2W (Remote Sensor Only)



Area Alarm GM100M-A-OVANC2WI (Remote Sensor Only)

Electrical and Physical Specifications

MECHANICAL

Front Panel	Metal Alloy & ABS
Case Body	Metal Alloy
Dimensions (Width x Height x Depth)	Overall Size: 280mm x 193mm x 103mm Beneath the Wall: 262mm x 181mm x 98mm
Wall Mounting Opening (Width x Height)	262mm x 181mm

ELECTRICAL

Power Requirements	Input: 100~240 VAC, 50~60Hz 0.5A Maximum
Processor	32-bit RISC Micro-controller
Display	10" TFT LCD LED Back Light Resolution: 1024x600 Pixels Colors :65536 Brightness: 200 cd/m ² Touch Panel: 4 wires resistance LCD Life Times: 50000 hours
Buttons	Resistance Touch Panel
Buzzer	Adjustable Volume

COMMUNICATION

Modbus RTU	9600/19200 baud, standard (8,N,1)
UDP	Modbus RTU over UDP
Modbus TCP	10/100M Automatic Selection for Ethernet
BACnet	MS/TP

Input/Output

Analog Input	Number of Channels: 8 Type: 4-to-20 mA Double-wire Transmitter Input ADC Resolution: 14 bit / 1% Range of Transmitter
Digital Input	Number of Channels: 14 Type: Dry Contact or TTL
Relay Output	Number of Channels: 7 Range: 0.15A at 48VDC 1A at 30VDC 0.5A at 120VAC
Current Output	Number of Channels: 2 Maximum Load: 4~20mA , in Relation to 1~5V Current for 4~20 mA Double-wire Transmitter

Display Pages

Alarm history Data	200 events
Analog Trends	24 hours (Display in percentage)
Parameters Setup	provided

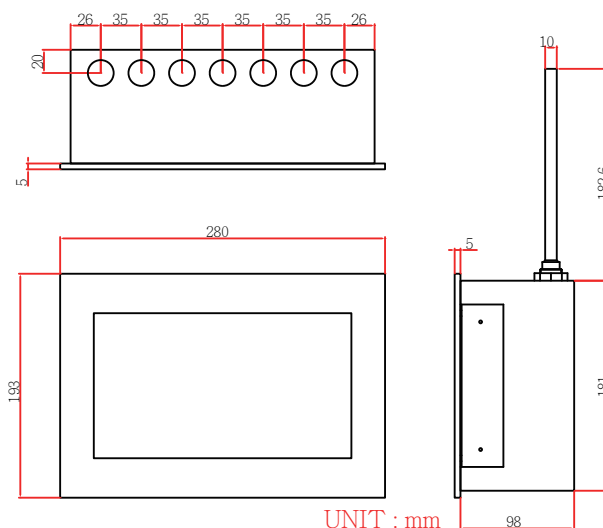
Regulations and Certifications

Comply with NFPA99, HTM 02-01
CE61326-1 · UL1069 and CSA 22.2 No.205

ENVIRONMENT

Ambient Temperature	0°C ~ 50°C (32°F ~ 122°F)
Ambient Humidity	10% ~85% RH, non-condensing
Cooling	Natural Air Cooling

Dimensions



UNIT : mm

For local 1~5 gas type and remote 1~8 gas type

Order Information

Name	Type -U	Gas Type -X
GM100M	A: Area Alarm C: Combo Alarm M: Master Alarm R: Remote Display	X: Gas/Sensor Type

Gas Type Code

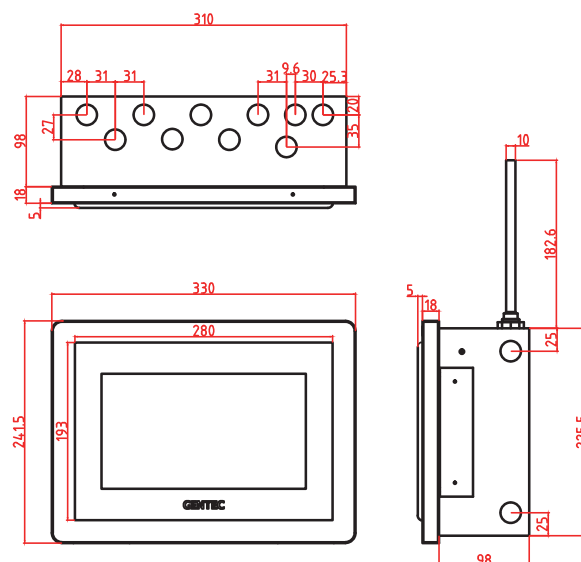
O: Oxygen	2: Nitrous Oxide
V: Vacuum	C: Carbon Dioxide
A: Medical Air	W: WAGD Vacuum
I: Instrument Air	L: Level
N: Nitrogen	

Annotations

Gas type option is for area alarm and aombo alarm only.
Area alarm can choose gas type up to 8 different gases.
Combo alarm can choose gas type up to 3 different gases.
Digital inputs are available for Combo Alarm and Master Alarm Only.
Combo alarm with 1 or 2 gases can chose digital input up to 14 inputs.
Combo alarm with 3 gases can chose digital input up to 12 inputs.
Master alarm has digital input up to 21 inputs.

Example

GM100M-A-OVA
Area alarm with 3 gases ; Gas type: O2/Vac./Air
GM100M-C-OV
Combo alarm with 2 gases ; Gas type: O2/Vac.
GM100M-M
Master alarm



For Local 6~8 gas type

Contact Information

Gentec Systems Corporation
5F., No.51-3, Fusing Rd., Sindan District,
new Taipei City 23150 Taiwan
Tel: 886-2-8667-3290
Fax: 886-2-8667-3289

WE MAKE NO WARRANTY OR REPRESENTATION, EITHER EXPRESSED OR IMPLIED,
WITH RESPECT TO ITS CONTENT OR FITNESS FOR ANY PARTICULAR APPLICATION.