

Spec

- Range : -760~0mmHg (Gage)
- Output : DC 4~20mA
- Accuracy : ±1.0%F·S
- Total error : ±2.0%F·S
- Power : DC 11~30V
- Temperature Compensated:0~50° C
- Operation Temperature:-20~80° C
- Wetted Material : 304L&316L

20mA Output

Cable Color

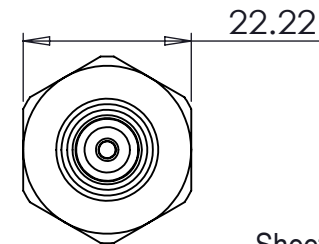
Red : IN+

White : OUT+

Black : spare

Green : E-case

P56-(-14.7-0)G-SI-0G-20mA  
 -14.7 psi equal 760mmHg Gage  
 SI:R 1/8(1/8 PT)female  
 20mA: DC4~20mA  
 0G:0.3M cable length



Sheet 3 of 3

|            |      |                                    |                      |
|------------|------|------------------------------------|----------------------|
| 客戶: GENTEC |      | 客戶圖號:                              |                      |
| 產品No: P56  |      | DWG.NO.06038C                      |                      |
| 一般公差       |      |                                    |                      |
| 尺寸範圍       | 容許差  | TSMC No: P56-(-14.7-0)G-SI-0G-20mA |                      |
| 0.5<D≤3    | ±0.1 | CHD.BY-Chunk.Lin                   | DRN.BY- Sun JenCheng |
| 3<D≤6      | ±0.1 |                                    |                      |
| 6<D≤30     | ±0.2 | DATE: 2018/01/11 MATERIAL: NA      |                      |
| 30<D≤120   | ±0.3 | REV- 1                             | UNIT- MM SCALE-1:1   |
| 120<D≤400  | ±0.5 |                                    |                      |
| 400<D≤1000 | ±0.8 |                                    |                      |
| ANGULAR    | ±0.5 |                                    |                      |

